

### ULTRA FAST RECTIFIER

VOLTAGE RANGE: 50 --- 1000 V

CURRENT: 1.0 A

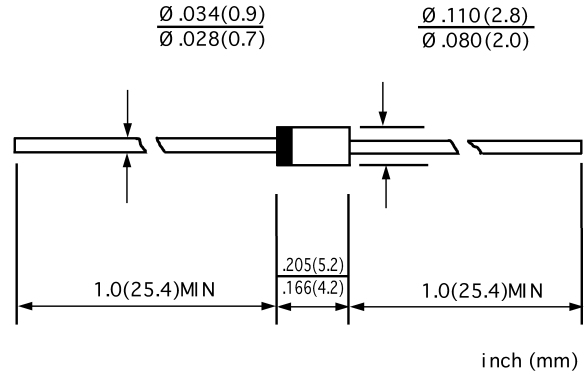
#### FEATURES

- ◇ Low cost
- ◇ Diffused junction
- ◇ Low leakage
- ◇ Low forward voltage drop
- ◇ High current capability
- ◇ Easily cleaned with freon, alcohol, Isopropanol and similar solvents
- ◇ The plastic material carries U/L recognition 94V-0

#### MECHANICAL DATA

- ◇ Case: JEDEC DO-41, molded plastic
- ◇ Terminals: Axial lead, solderable per MIL-STD-202, Method 208
- ◇ Polarity: Color band denotes cathode
- ◇ Weight: 0.012 ounces, 0.34 grams
- ◇ Mounting position: Any

#### DO - 41



#### MAXIMUM RATINGS AND ELECTRICAL CHARACTERISTICS

Ratings at 25°C ambient temperature unless otherwise specified.

Single phase, half wave, 60 Hz, resistive or inductive load. For capacitive load, derate by 20%.

		UF4001	UF4002	UF4003	UF4004	UF4005	UF4006	UF4007	UNITS
Maximum recurrent peak reverse voltage	$V_{RRM}$	50	100	200	400	600	800	1000	V
Maximum RMS voltage	$V_{RMS}$	35	70	140	280	420	560	700	V
Maximum DC blocking voltage	$V_{DC}$	50	100	200	400	600	800	1000	V
Maximum average forward rectified current 9.5mm lead length, @ $T_A=75^\circ\text{C}$	$I_{F(AV)}$	1.0							A
Peak forward surge current 8.3ms single half-sine-wave superimposed on rated load @ $T_J=125^\circ\text{C}$	$I_{FSM}$	30.0							A
Maximum instantaneous forward voltage @ 1.0A	$V_F$		1.0		1.3		1.7		V
Maximum reverse current @ $T_A=25^\circ\text{C}$ at rated DC blocking voltage @ $T_A=100^\circ\text{C}$	$I_R$	10.0 100.0							$\mu\text{A}$
Maximum reverse recovery time (Note1)	$t_{rr}$	50				75			ns
Typical junction capacitance (Note2)	$C_J$	17							pF
Typical thermal resistance (Note3)	$R_{JA}$	60							$^\circ\text{C}$
Operating junction temperature range	$T_J$	- 55 ----- + 150							$^\circ\text{C}$
Storage temperature range	$T_{STG}$	- 55 ----- + 150							$^\circ\text{C}$

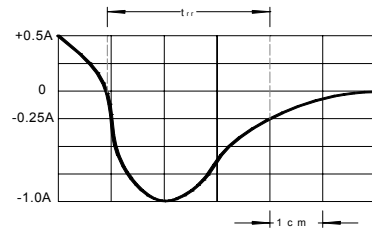
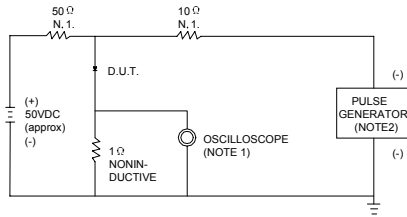
NOTE: 1. Measured with  $I_F=0.5\text{A}$ ,  $I_R=1\text{A}$ ,  $I_{rr}=0.25\text{A}$ .

2. Measured at 1.0MHz and applied reverse voltage of 4.0V DC.

3. Thermal resistance junction to ambient

www.diode.co.kr

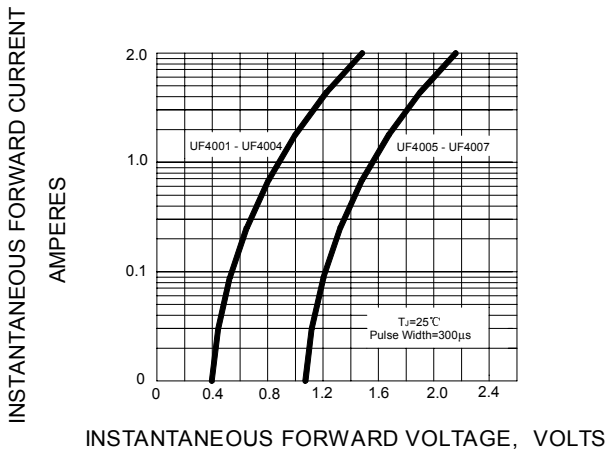
**FIG.1 -- TEST CIRCUIT DIAGRAM AND REVERSE RECOVERY TIME CHARACTERISTIC**



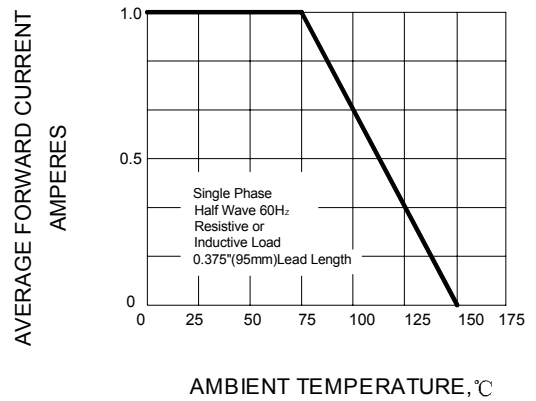
NOTES: 1. RISE TIME = 7ns MAX. INPUT IMPEDANCE = 1MΩ .22pF.  
2. RISE TIME = 10ns MAX. SOURCE IMPEDANCE = 50 Ω.

SET TIME BASE FOR 10/20 ns/cm

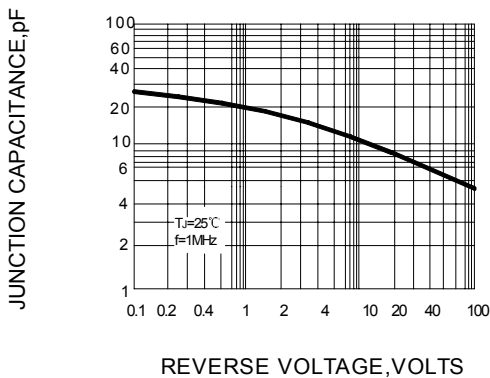
**FIG.2 -- TYPICAL FORWARD CHARACTERISTIC**



**FIG.3 -- FORWARD DERATING CURVE**



**FIG.4 -- TYPICAL JUNCTION CAPACITANCE**



**FIG.5 -- PEAK FORWARD SURGE CURRENT**

